

## Plastic square shape photoelectric sensors **PTE** series



### Features

- ◆Through beam reflection working principle;
- ◆Excellent anti-interference performance
- ◆High detection accuracy

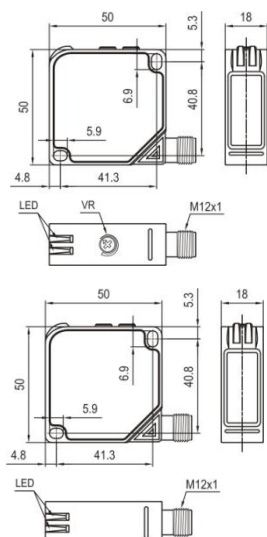
### Part number

	Emitter	Receiver
Relay output	PTE-TM60S-E2	PTE-TM60SK-E5

### Technical specifications

Detection type	Through beam	Consumption current	≤35mA
Rated distance [Sn]	60m (Emitter adjustable)	Circuit protection	.....
Standard target	>φ15mm opaque object	Response time	< 10ms
Light source	Infrared LED (850nm)	Output indicator	Emitter:Green LED Receiver:Yellow LED
Dimensions	50 mm *50 mm *18mm	Ambient temperature	-25°C...+55°C
Output	Relay output	Ambient humidity	35-85%RH (non-condensing)
Supply voltage	24...240 VAC/DC	Voltage withstand	2000V/AC 50/60Hz 60s
Min target	.....	Insulation resistance	≥50MΩ(500VDC)
Hysteresis range [%/Sr]	.....	Vibration resistance	10...50Hz (0.5mm)
Repeat accuracy [R]	≤5%	Degree of protection	IP67
Load current	≤3A (receiver)	Housing material	PC/ABS
Residual voltage	.....	Connection type	M12 connector

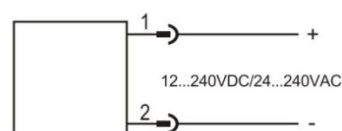
### Dimensions



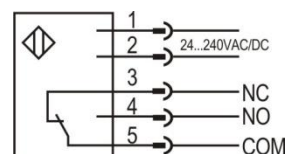
Emitter

Receiver

### Wiring diagram



Emitter



Receiver