

Plastic square shape photoelectric sensors PSE series



Features

- Universal housing, an ideal replacement for a wide range of sensor types;
- IP67, suitable for harsh environments;
- Fast and stable setting;
- NO and NC are switchable;



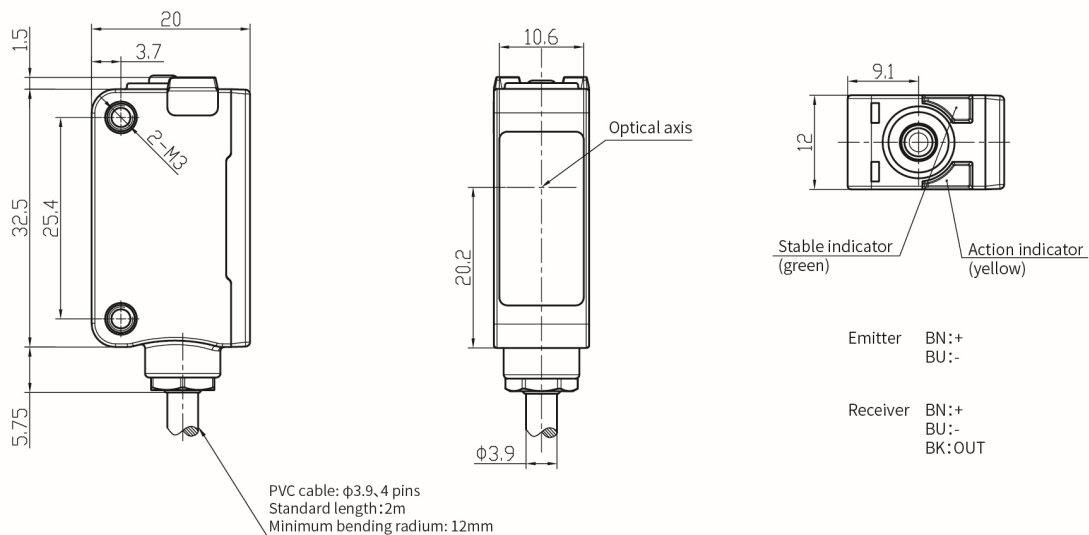
Model

| | Emitter | Receiver | | Emitter | Receiver |
|-----------|-----------|-------------|-----------|-----------|-------------|
| NPN NO/NC | PSE-TM20D | PSE-TM20DNB | PNP NO/NC | PSE-TM20D | PSE-TM20DPB |

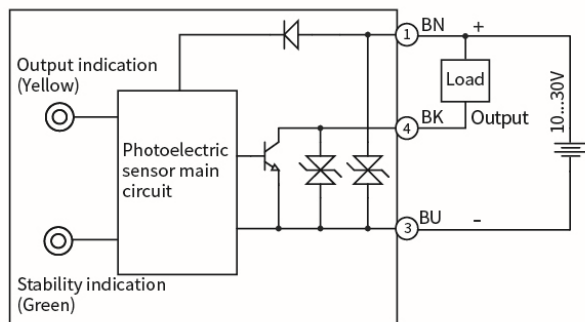
Specifications

| | | | |
|---------------------|---|-----------------------|---|
| Detection type | Through beam | Indicator | Green light: power, stable signal (unstable signal flash) |
| Rated distance | 20m | | Yellow light: output, overload or short circuit (flash) |
| Output | NPN NO/NC or PNP NO/NC | Anti-ambient light | Anti-sunlight interference $\leq 10,000\text{lux}$; |
| Response time | $\leq 1\text{ms}$ | | Incandescent light interference $\leq 3,000\text{lux}$ |
| Sensing object | $\geq \Phi 10\text{mm}$ opaque object (within Sn range) | Operating temperature | $-25^{\circ}\text{C} \dots 55^{\circ}\text{C}$ |
| Direction angle | $> 2^{\circ}$ | Storage temperature | $-25^{\circ}\text{C} \dots 70^{\circ}\text{C}$ |
| Supply voltage | 10...30 VDC | Protection degree | IP67 |
| Consumption current | Emitter: $\leq 20\text{mA}$; Receiver: $\leq 20\text{mA}$ | Certification | CE |
| Load current | $\leq 200\text{mA}$ | Production standard | EN60947-5-2:2012、IEC60947-5-2:2012 |
| Voltage drop | $\leq 1\text{V}$ | Material | Housing: PC+ABS; Filter: PMMA |
| Light source | Infrared (850nm) | Weight | 50g |
| Circuit protection | Short-circuit, overload, reverse polarity and zener protection | Connection | 2m PVC cable |
| NO/NC adjustment | Press the button for 5...8s, when the yellow and green light flash synchronously at 2Hz, and lift. Finish state switch. | | |
| Distance adjustment | Press the button for 2...5s, when the yellow and green light flash synchronously at 4Hz, and lift to finish the distance setting. | | |
| | If the yellow and green light flash asynchronously @8Hz for 3s, setting fails and the product distance goes to the maximum. | | |

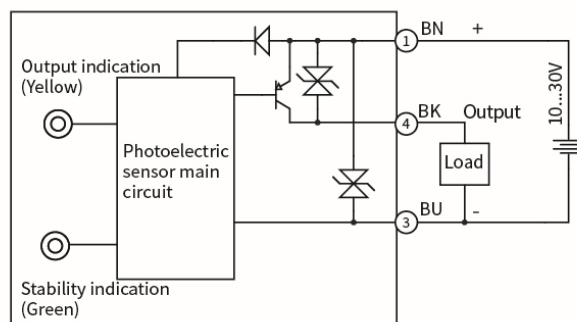
Dimensions



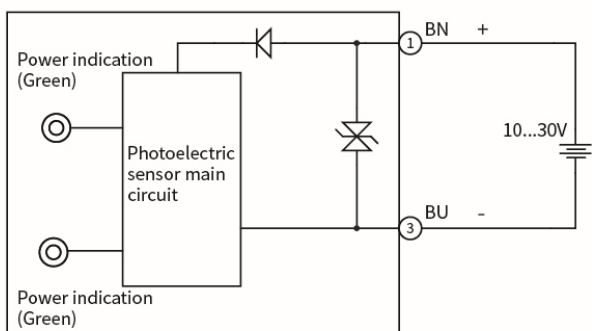
Circuit Diagrams



NPN



PNP



Emitter