

Plastic square shape inductive sensors **LE18** series


Features

- ◆ Non contact detection, safe and reliable;
- ◆ ASIC design;
- ◆ Perfect choice for metallic targets detection;



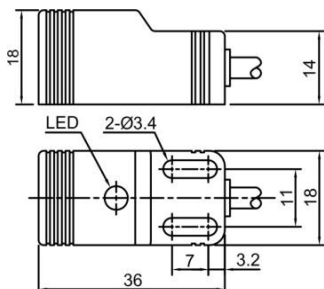
Part number

NPN NO	LE18SF05DNO	LE18SN08DNO	PNP NO	LE18SF05DPO	LE18SN08DPO
NPN NC	LE18SF05DNC	LE18SN08DNC	PNP NC	LE18SF05DPC	LE18SN08DPC

Technical specifications

Mounting	Flush	Non-flush	Current consumption	≤10mA	
Rated distance [Sn]	5mm	8mm	Circuit protection	Short-circuit, overload and reverse polarity	
Assured distance [Sa]	0...4mm	0...6.4mm	Output indicator	Yellow LED	
Dimensions	18 *18 *36 mm		Ambient temperature	-25°C...70°C	
Output	NO/NC(depends on part number)		Ambient humidity	35-95%RH	
Supply voltage	10...30 VDC		Switching frequency [F]	700 Hz	500Hz
Standard target	Fe 18*18*1t	Fe 24*24*1t	Voltage withstand	1000V/AC 50/60Hz 60s	
Switch-point drifts [%/Sr]	≤ ± 10%		Insulation resistance	≥50MΩ(500VDC)	
Hysteresis range [%/Sr]	1...20%		Vibration resistance	10...50Hz (1.5mm)	
Repeat accuracy [R]	≤ 3%		Degree of protection	IP67	
Load current	≤ 100mA		Housing material	PBT	
Residual voltage	≤ 2.5V		Connection type	2m PVC cable	

Dimensions



Wiring diagram

