

yoMetal square inductive sensor **LE05** series



Feature description:

- ◆ Non-contact detection, safe and reliable, no wear;
- ◆ Adopt ASIC technology, with stable performance;
- ◆ Compact shape, flexible installation, suitable for very small space;
- ◆ IP67



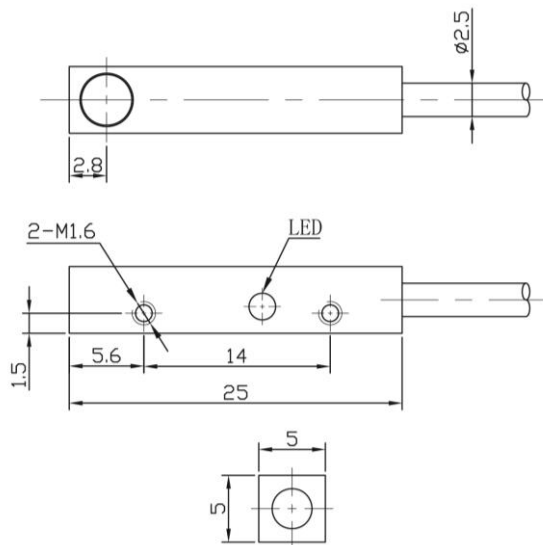
Part number

DC 2 wires NO	LE05VF08DLO	DC 2 wires NC	LE05VF08DLC
---------------	-------------	---------------	-------------

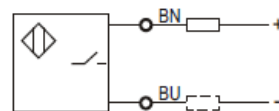
Specification

Installation	Flush	Protection circuit	Overload, short-circuit and reverse polarity protection
Rated distance S_n	0.8mm	Output indicator	Red LED
Assured distance S_a	0...0.64mm	Ambient temperature	-25°C...70°C
Shape size	25*5*5mm	Ambient humidity	35...95%RH
Output	NO/NC	Switch frequency	1500 Hz
Supply voltage	10...30 VDC	Impulse resistance	1000V/AC 50/60Hz 60s
Standard target	Fe 6*6*1t	Insulation resistance	$\geq 50M\Omega(75VDC)$
Switch point offset [%/Sr]	$\leq \pm 10\%$	Vibration resistance	Complex amplitude 1.5mm 10...50Hz (2h per X,Y,Z direction)
Hysteresis range [%/Sr]	1...20%	Protection degree	IP67
Repeated error	$\leq 5\%$	Housing material	Aluminum alloy
Load current	$\leq 100mA$	Connection	2m PUR cable
Residual voltage	$\leq 8V$		
Current consumption	$\leq 15mA$		

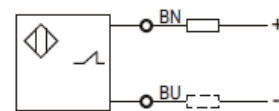
Dimensions



Wiring Diagram



DC2 wire NO



DC2 wire NC