

Plastic square shape photoelectric sensors PSE series



Feature description

- Universal housing, an ideal replacement for a wide range of sensor types
- IP67, suitable for harsh environments
- Large knob design, convenient and fast adjustment distance
- Small detection dead zone, suitable for the detection of high light objects
- Product FGS and BGS can be switched, suitable for use in various occasions



Model specification

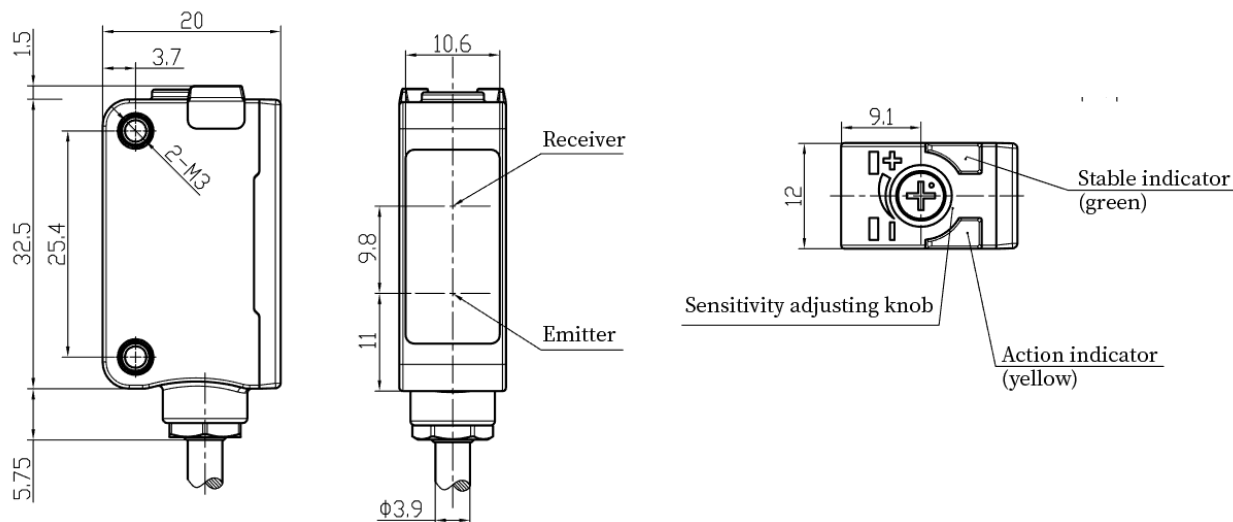
| | | | |
|--------|-------------|--------|-------------|
| NPN NO | PSE-YC5DNOR | PNP NO | PSE-YC5DPOR |
| NPN NC | PSE-YC5DNCR | PNP NC | PSE-YC5DPCR |

Specifications

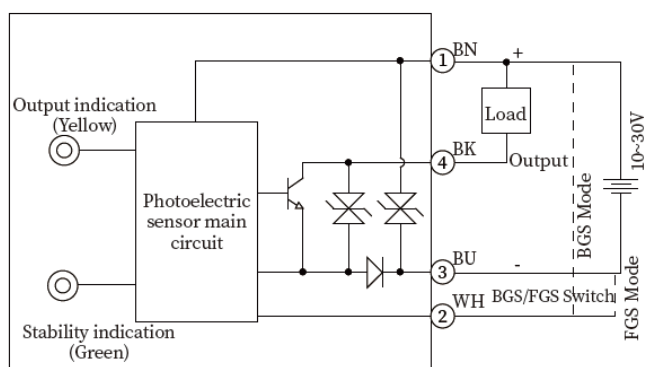
| | | | |
|---------------------|---|---------------------|---|
| Detection method | Background suppression | Response time | ≤0.5ms |
| Sensing distance | 0.2...5cm | Indicator | Green:Power indicator;Yellow:Output,overload or short circuit |
| Distance adjustment | 5-turn knob adjustment | Anti-ambient light | Sunlight interference≤10,000 lux |
| BGS/FGS Switch | The white wire connected to the positive electrode or floating is | | Anti-incandescent light interference≤3,000 lux |
| | BGS and the white wire connected to the Negative electrode is FGS | Ambient temperature | -25°C ...55 °C |
| Light spot size | φ2mm@5cm | Storage temperature | -25°C ...70 °C |
| Return difference | < 2% | Protection degree | IP67 |
| Supply voltage | 10...30 VDC | Certification | CE |
| Consumption current | ≤20mA | Material | PC+ABS |
| Load current | ≤100mA | Lens | PMMA |
| Voltage drop | ≤2V | Weight | 2m PVC Cable(50g) |
| Light source | Red light(630nm) | Accessories | Screw(M3×12mm)×2、Mounting bracket ZJP-8 |
| Circuit protection | Short circuit、Reverse polarity、Overload、Zener protection | | Operation manual |

Note: The standard detection target is a white card of 20cm*20cm(90% reflectivity)

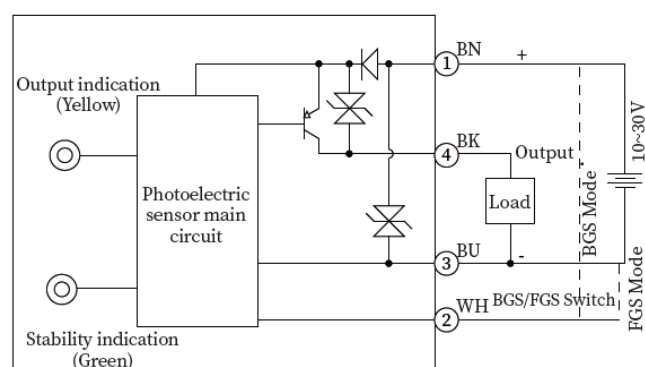
Dimension



Wiring diagram



NPN



PNP